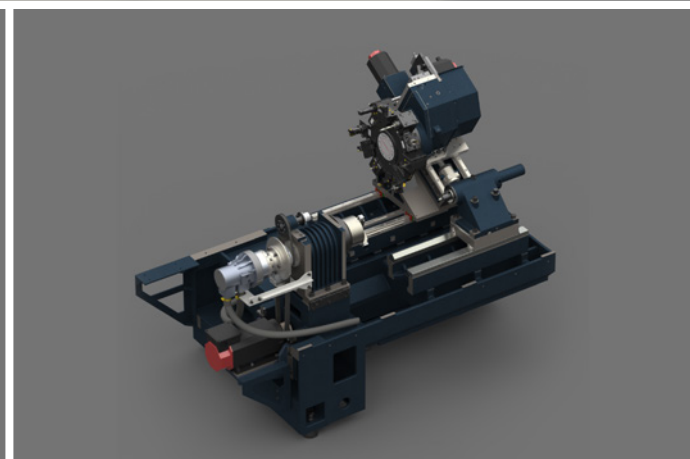
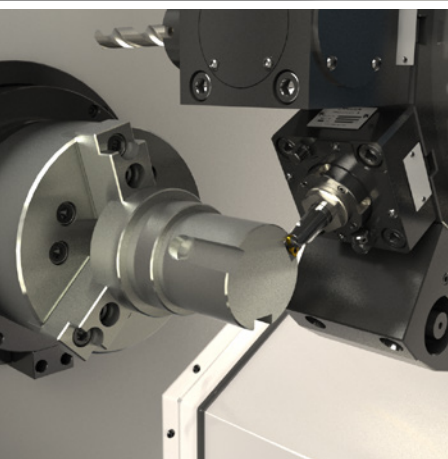


TARGET

CNC
Turn-Mill Center

LH 210M

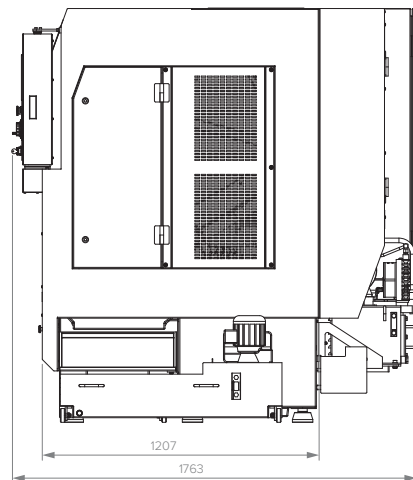
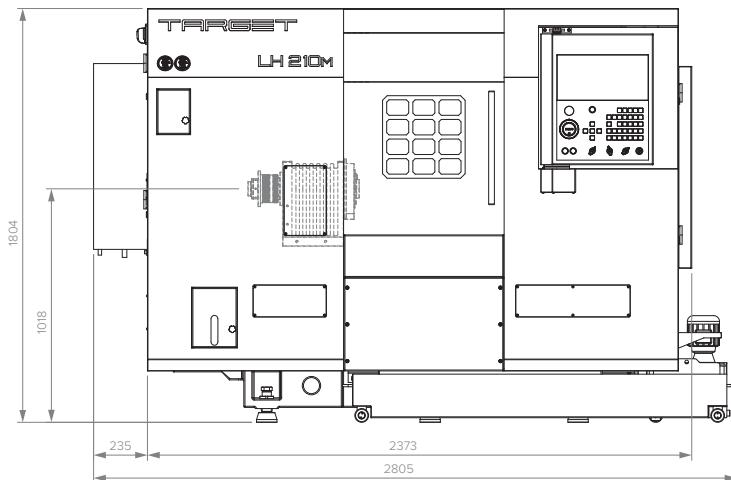
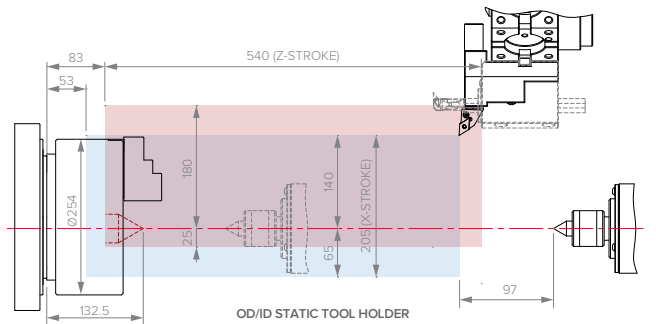
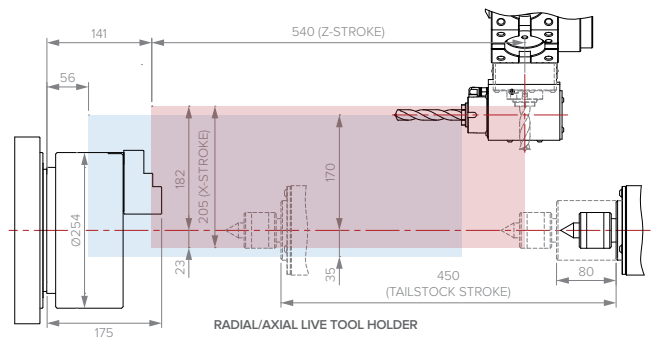
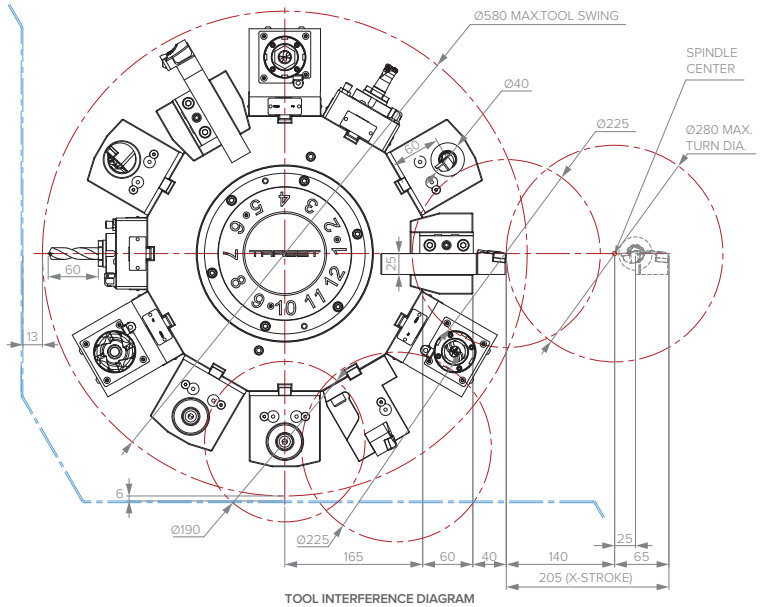
Turning 30 years
of experience into perfection



SPECIFICATIONS

| Item | Unit | LH 210M |
|--|-------|--------------------------|
| Capacity | | |
| Turning Diameter (Max) | mm | Ø280 |
| Turning Length (Max) | mm | 540 |
| Bar Capacity (Max) | mm | Ø66 |
| Swing Over Cross Slide | mm | Ø340 |
| Swing Over Way Covers | mm | Ø600 |
| Main Spindle | | |
| Spindle Nose | ASA | A2-6 |
| Spindle Bore Diameter | mm | Ø78 |
| Spindle Bearing Diameter (Front) | mm | Ø110 |
| Chuck Size (Standard) | mm | Ø254 |
| Spindle Speed (Standard/Option) | rpm | 4500/2500 |
| Spindle Power Continuous (30 min) | kW | 11.0 (15.0) |
| Turret | | |
| Type: Servo Index w/ Hydraulic Clamping | | BMT Tool Disc |
| No. of Tool Stations | | 12 |
| Turning Tool Shank Size | mm | 25 x 25 |
| Boring Bar Diameter (Max) | mm | Ø40 |
| Index Time (1 Station) | s | 0.9 |
| Index Time (180°) | s | 1.6 |
| Live Tooling | | |
| No. of Live Tool Mounting Stations (Max) | | 12 |
| Live Tool Type | | BMT 55 |
| Speed (Max) | rpm | 3000 |
| Power (Max) | kW | 2.2 |
| Torque (Max) | Nm | 14 |
| Feed Drives | | |
| X Axis Rapid Traverse | m/min | 30 |
| Z Axis Rapid Traverse | m/min | 30 |
| X Axis Stroke | mm | 205 |
| Z Axis Stroke | mm | 540 |
| Type of Guide Ways - X & Z Axes | | LM Guides |
| Tailstock | | |
| Quill Diameter | mm | Ø80 |
| Quill Taper Size | | MT-4 |
| Quill Thrust (Max) | kg | 500 |
| Quill Stroke | mm | 80 |
| Tailstock Base Travel | mm | 450 |
| Type of Guide Ways | | V & Flat |
| C Axis | | |
| Least Programmable Value | deg | 0.001 |
| Rapid Traverse (Max) | rpm | 100 |
| Accuracies | | |
| Spindle Nose Run-out TIR (Max) | mm | 0.005 |
| Positioning Accuracy - X & Z Axes | mm | ±0.010 |
| Repeatability - X & Z Axes (Max) | mm | 0.005 |
| Machine Size and Power | | |
| Length (w/o Chip Conveyor) | mm | 2805 |
| Height | mm | 1804 |
| Width | mm | 1763 |
| Height of Spindle Center | mm | 1018 |
| Weight | kg | 3820 |
| Power (w/o Options) | kVA | 25 |
| Control | | |
| CNC System | | FANUC/Mitsubishi/Siemens |
| Axis Drive | | AC Digital Servo |
| Spindle Drive | | AC Spindle Servo |

Due to continuous improvements in design, the specifications are subject to change without notice.



| | |
|-----------------------|---|
| Other Variants | CNC Turning Center LH 206, CNC Turning Center LH 208, CNC Turning Center LH 210, CNC Turn-Mill Center LH 206M, CNC Turn-Mill Center LH 208M |
|-----------------------|---|

| | |
|------------------------|---|
| Machine Options | Parts Catcher, Chip Conveyor, Steady Rest, Bar Puller, Bar Feeder |
|------------------------|---|